

Click to see
Defaults

This document is interactive
use your mouse and click on Defaults
then on the other sub-menu items to
go to the related page

More instructions are available
on YouTube [link](#)

Set the Defaults in InSite
before using it for the first time.
Changes will take effect on the next
and any future projects.

Filename:

None

Model Status:

Ground

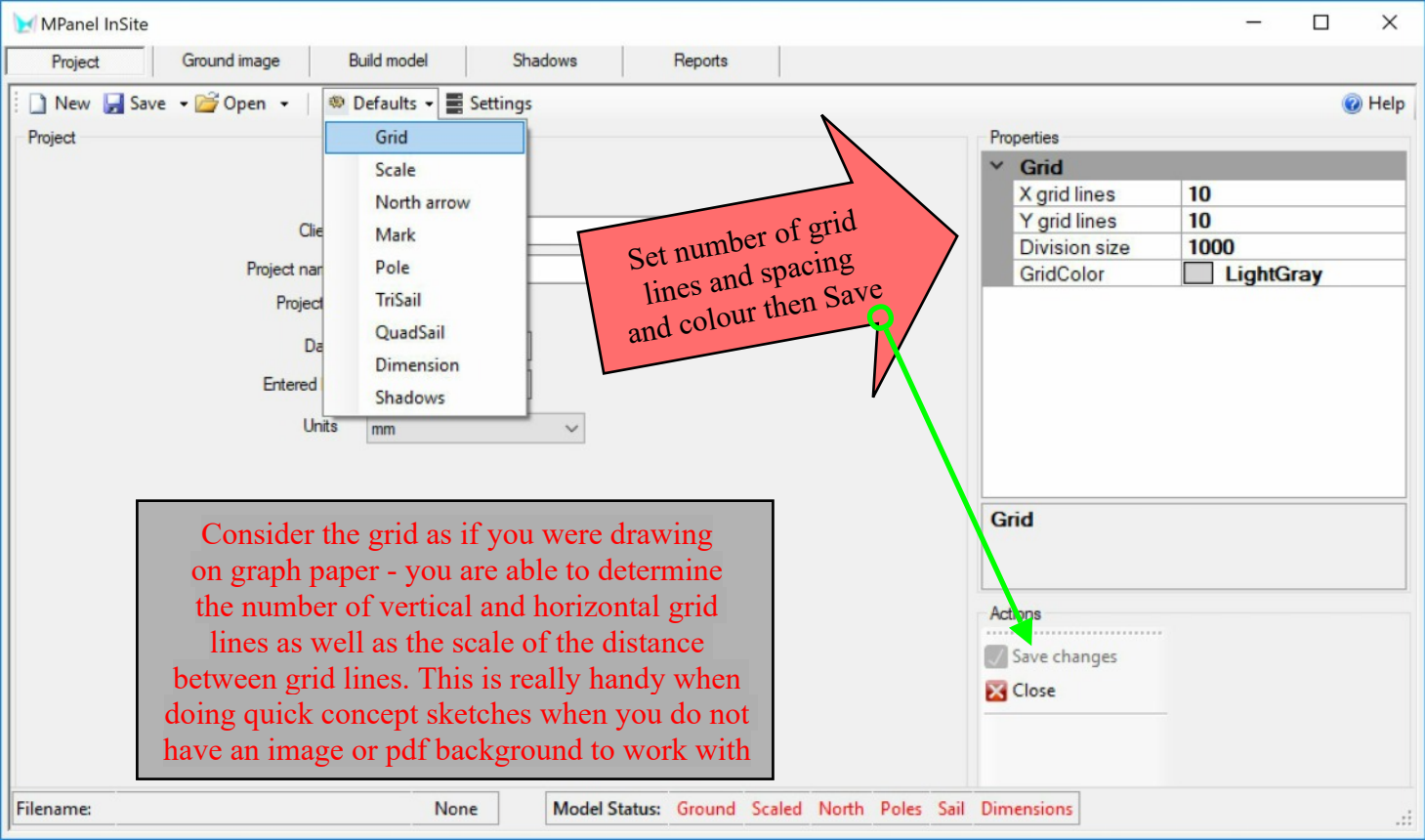
Scaled

North

Poles

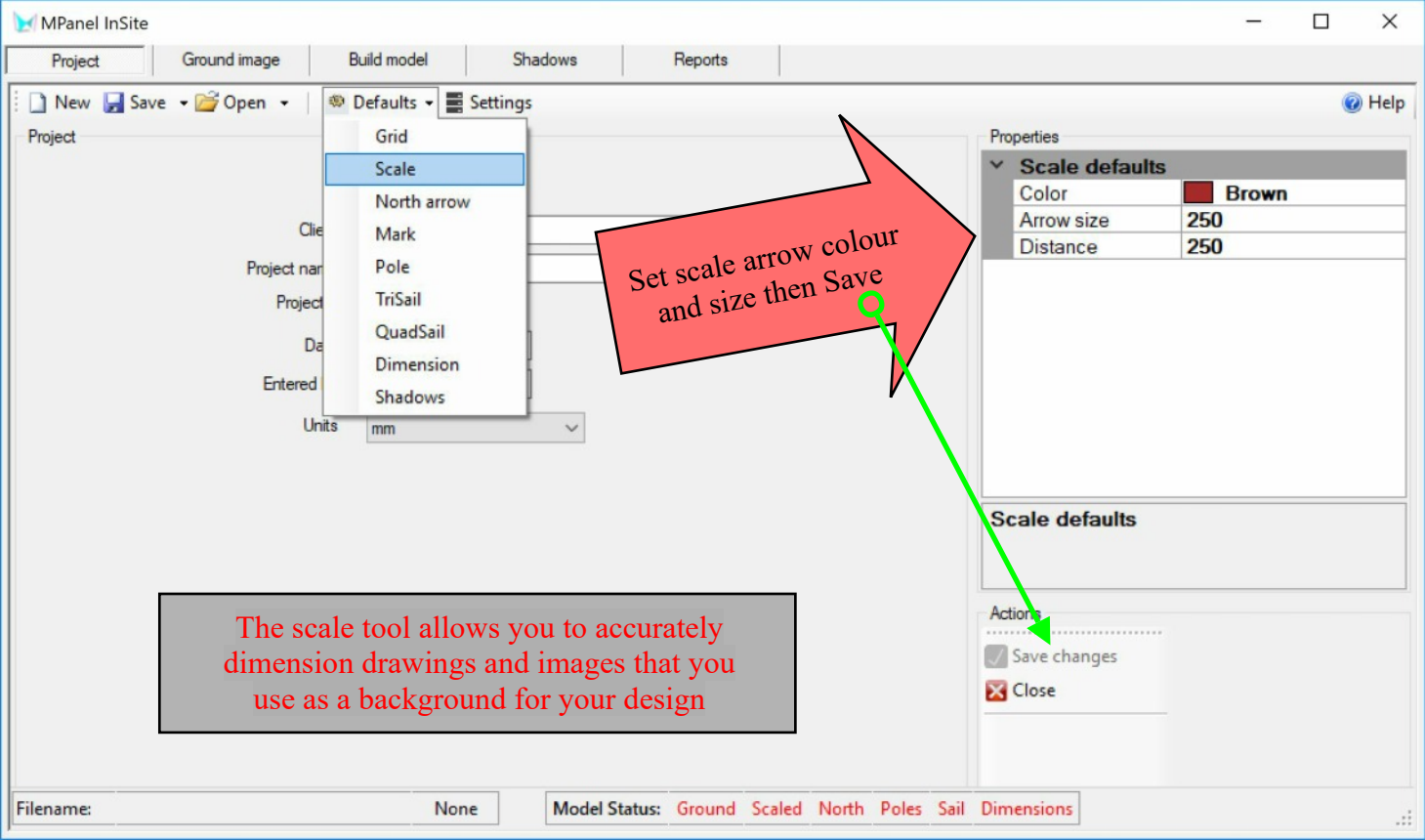
Sail

Dimensions



Set number of grid lines and spacing and colour then Save

Consider the grid as if you were drawing on graph paper - you are able to determine the number of vertical and horizontal grid lines as well as the scale of the distance between grid lines. This is really handy when doing quick concept sketches when you do not have an image or pdf background to work with




Set scale arrow colour
and size then Save

The scale tool allows you to accurately
dimension drawings and images that you
use as a background for your design

Properties

▼ Scale defaults

Color	 Brown
Arrow size	250
Distance	250

Scale defaults

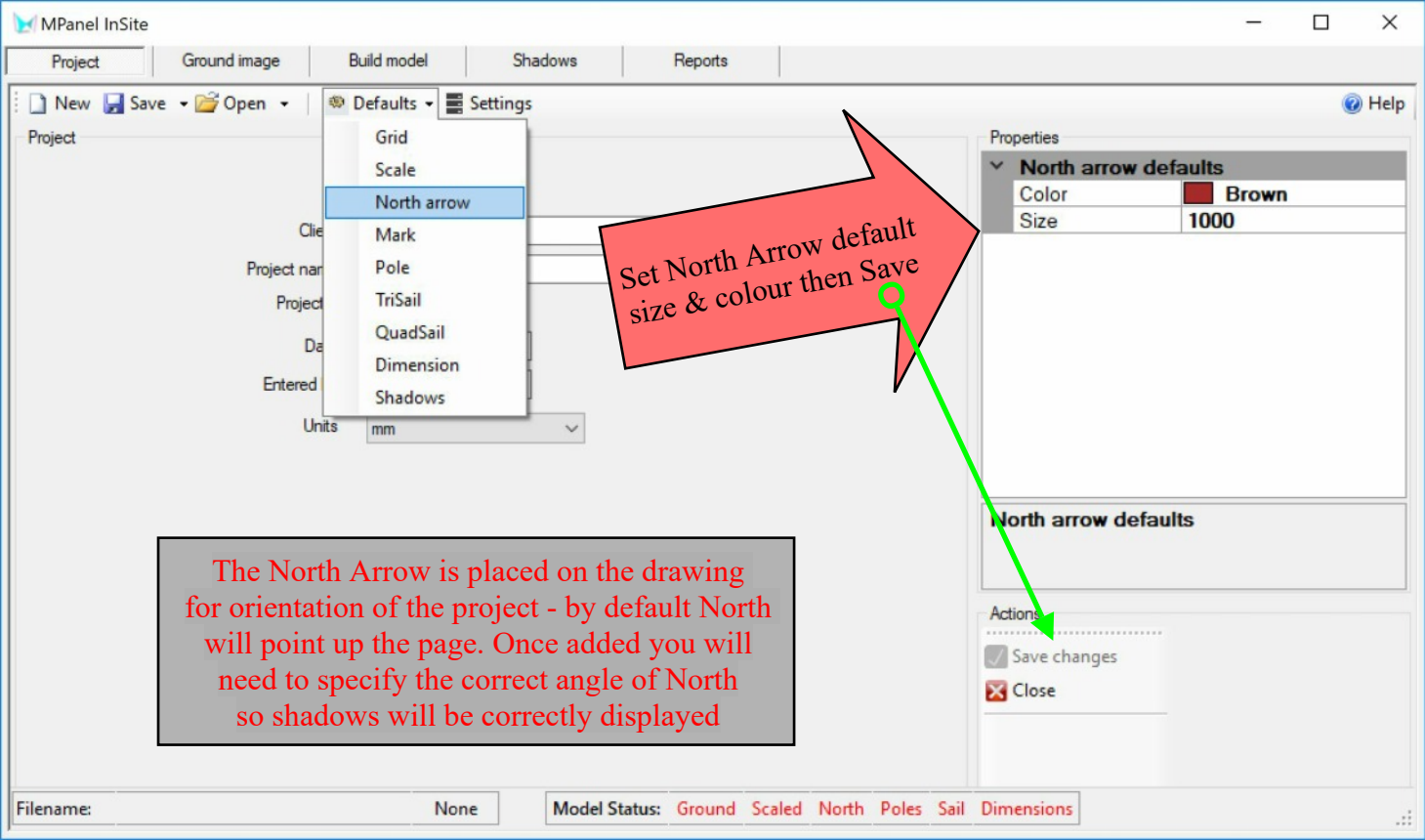
Actions

- ☒ Save changes
- ☐ Close

Filename:

None

Model Status: Ground Scaled North Poles Sail Dimensions



Set North Arrow default
size & colour then Save

The North Arrow is placed on the drawing
for orientation of the project - by default North
will point up the page. Once added you will
need to specify the correct angle of North
so shadows will be correctly displayed

Properties

North arrow defaults

Color	Brown
Size	1000

North arrow defaults

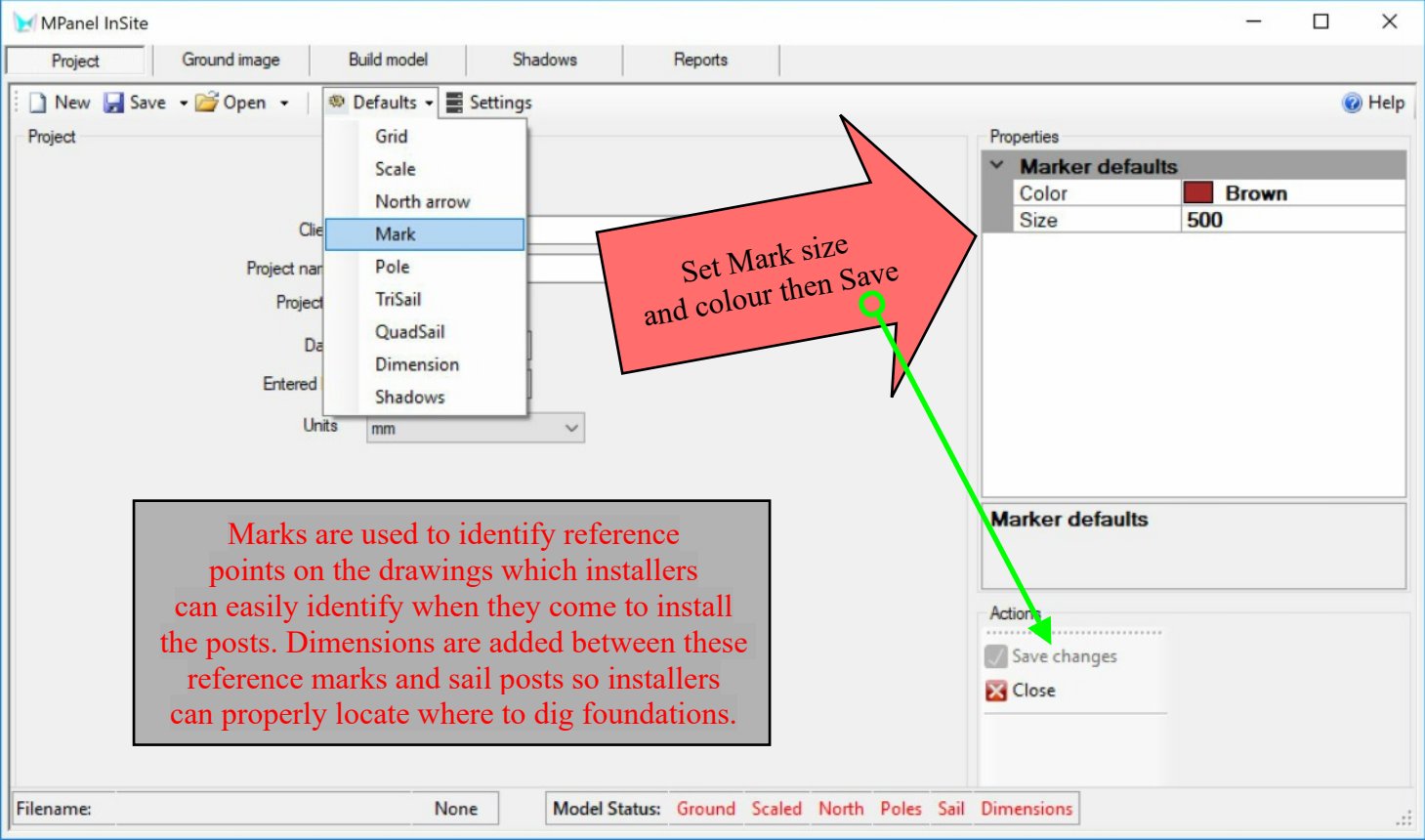
Actions

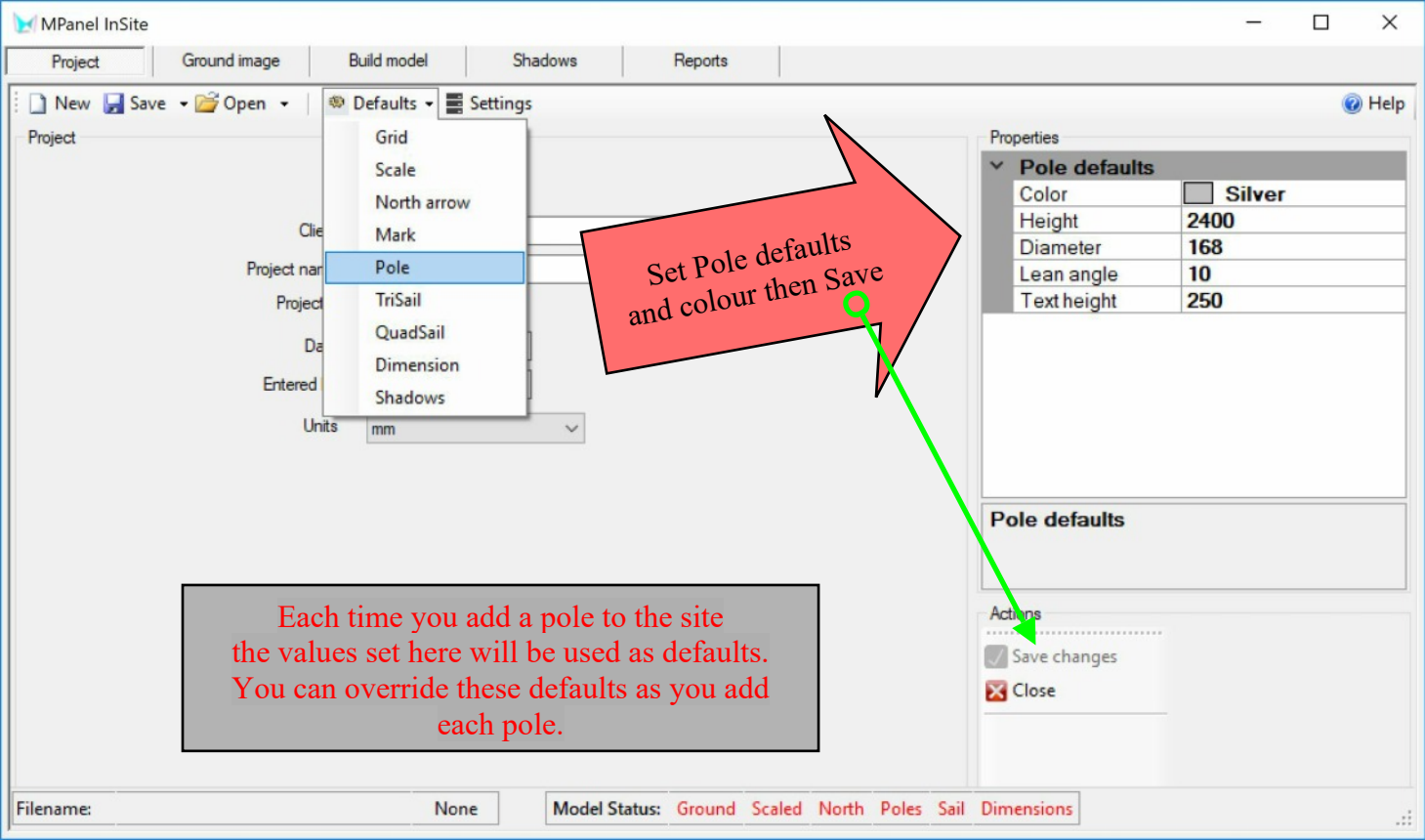
☒ Save changes
☒ Close

Filename:

None

Model Status: Ground Scaled North Poles Sail Dimensions





Set Pole defaults
and colour then Save

Each time you add a pole to the site
the values set here will be used as defaults.
You can override these defaults as you add
each pole.

Properties

▼ Pole defaults

Color	 Silver
Height	2400
Diameter	168
Lean angle	10
Text height	250

Pole defaults

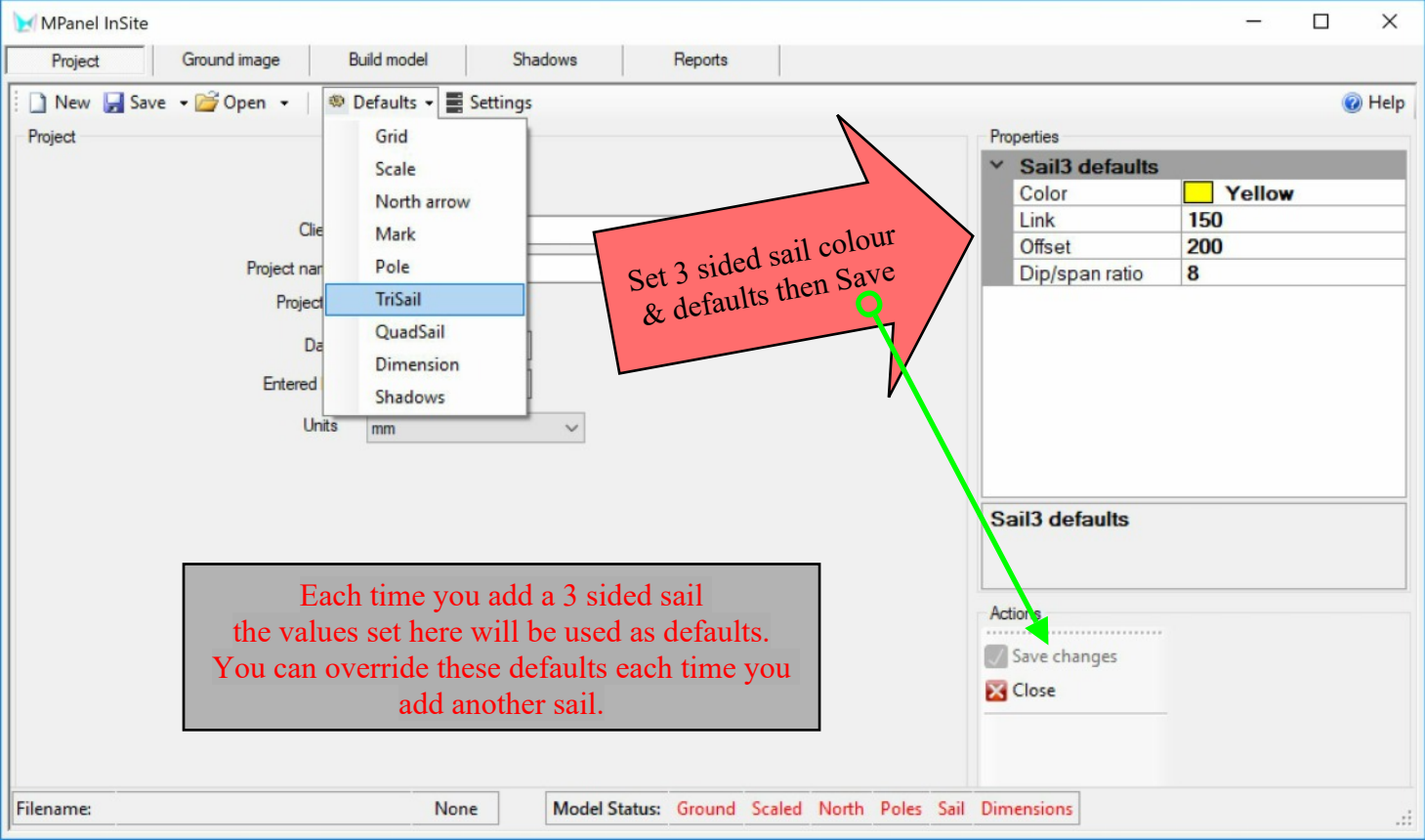
Actions

- ☒ Save changes
- ☐ Close

Filename:

None

Model Status: Ground Scaled North Poles Sail Dimensions



Set 3 sided sail colour
& defaults then Save

Each time you add a 3 sided sail
the values set here will be used as defaults.
You can override these defaults each time you
add another sail.

Properties

▼ **Sail3 defaults**

Color	 Yellow
Link	150
Offset	200
Dip/span ratio	8

Sail3 defaults

Actions

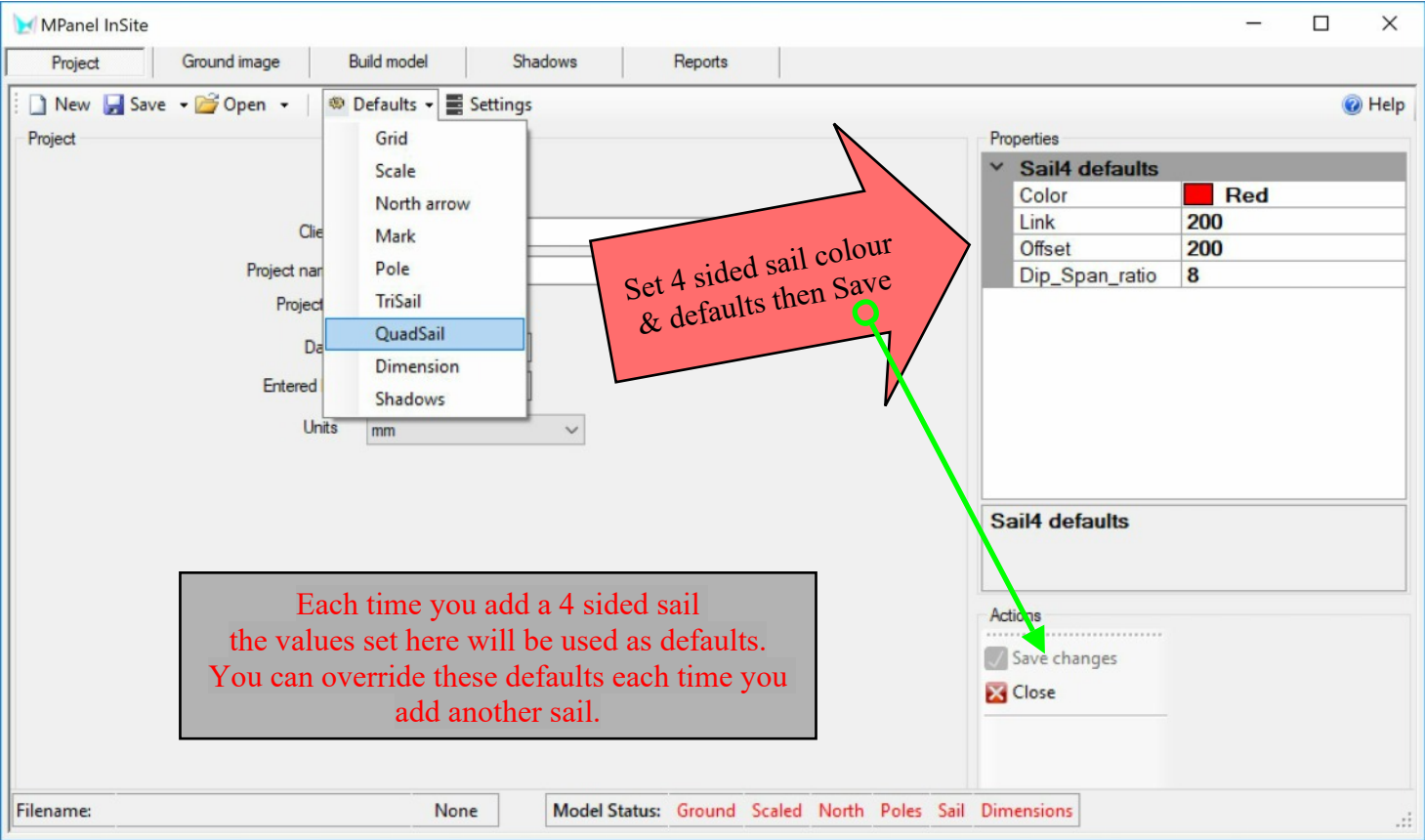
- ☒ Save changes
- ☐ Close

Filename:

None

Model Status:

Ground Scaled North Poles Sail Dimensions



Set 4 sided sail colour
& defaults then Save

Each time you add a 4 sided sail
the values set here will be used as defaults.
You can override these defaults each time you
add another sail.

Properties

Sail4 defaults

Color	 Red
Link	200
Offset	200
Dip_Span_ratio	8

Sail4 defaults

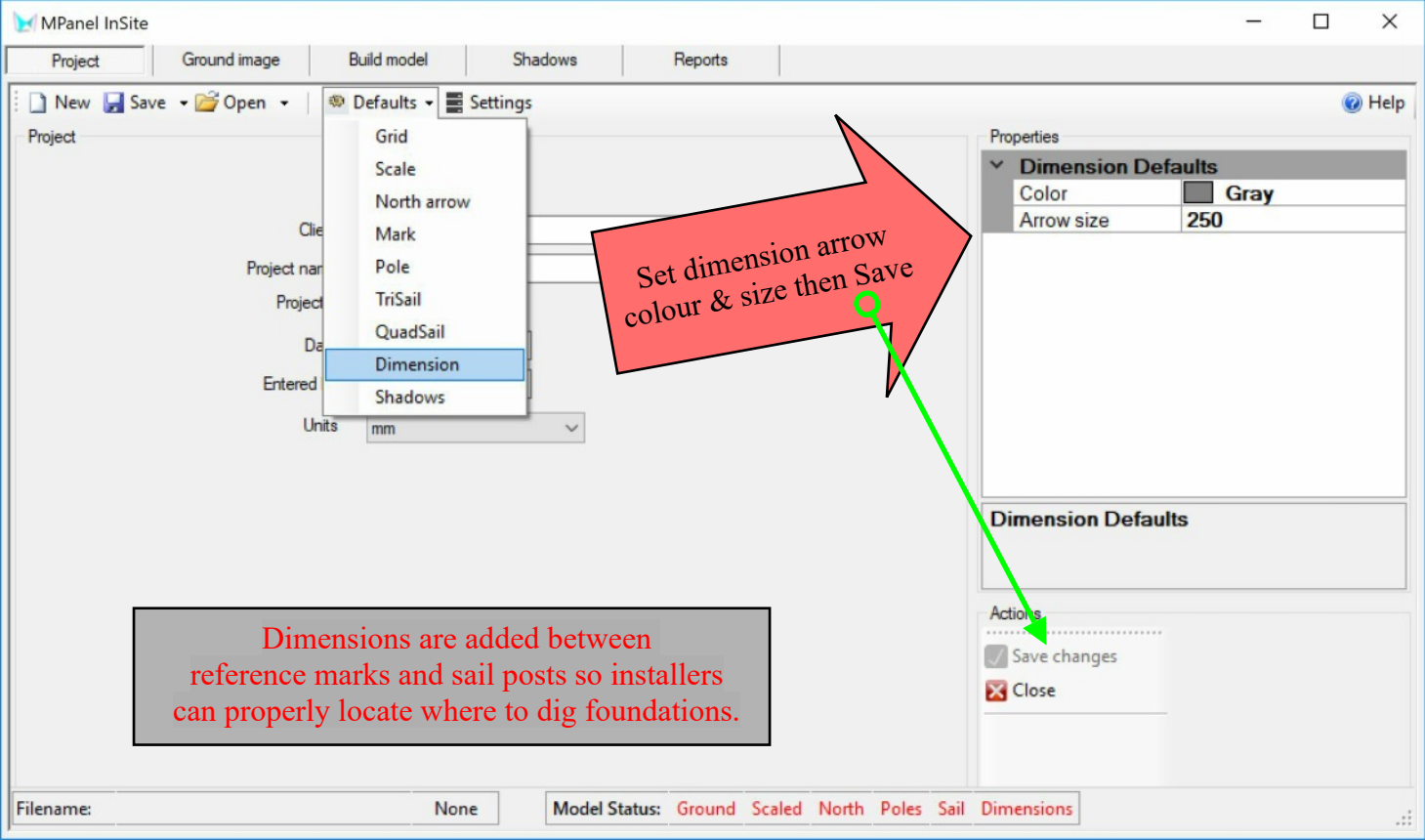
Actions

- ☒ Save changes
- ☐ Close

Filename:

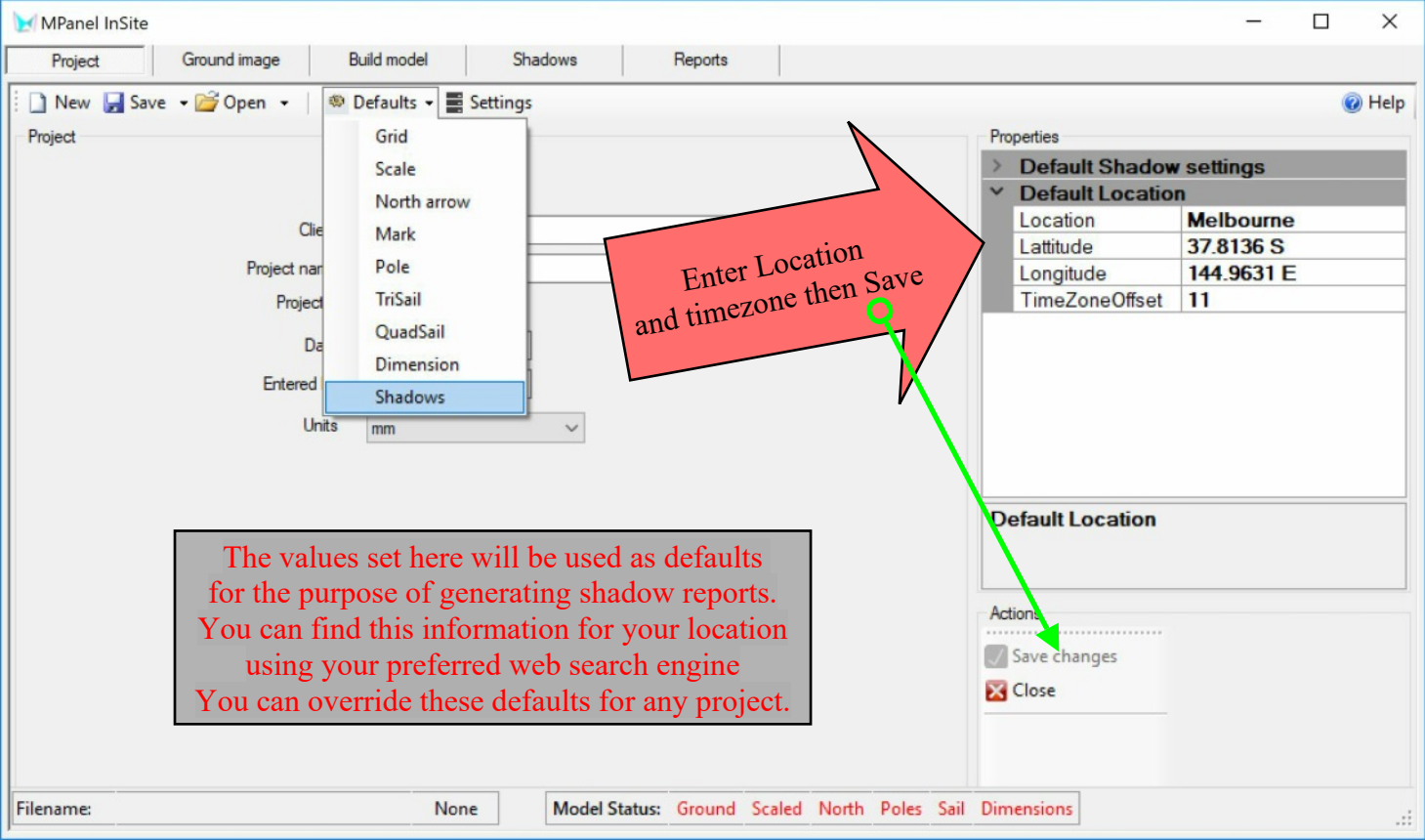
None

Model Status: Ground Scaled North Poles Sail Dimensions



Set dimension arrow
colour & size then Save

Dimensions are added between
reference marks and sail posts so installers
can properly locate where to dig foundations.



Enter Location
and timezone then Save

The values set here will be used as defaults for the purpose of generating shadow reports. You can find this information for your location using your preferred web search engine. You can override these defaults for any project.

Properties

> Default Shadow settings

▼ Default Location

Location	Melbourne
Latitude	37.8136 S
Longitude	144.9631 E
TimeZoneOffset	11

Default Location

Actions

- ☒ Save changes
- ☒ Close

Filename:

None

Model Status: Ground Scaled North Poles Sail Dimensions